

R Series Ex d Stainless Steel

3/2, 5/2, 5/3 Function Solenoid Valve Ex d IIC T4/T6

Flame Proof Stainless Steel Enclosure, CNOMO Interface



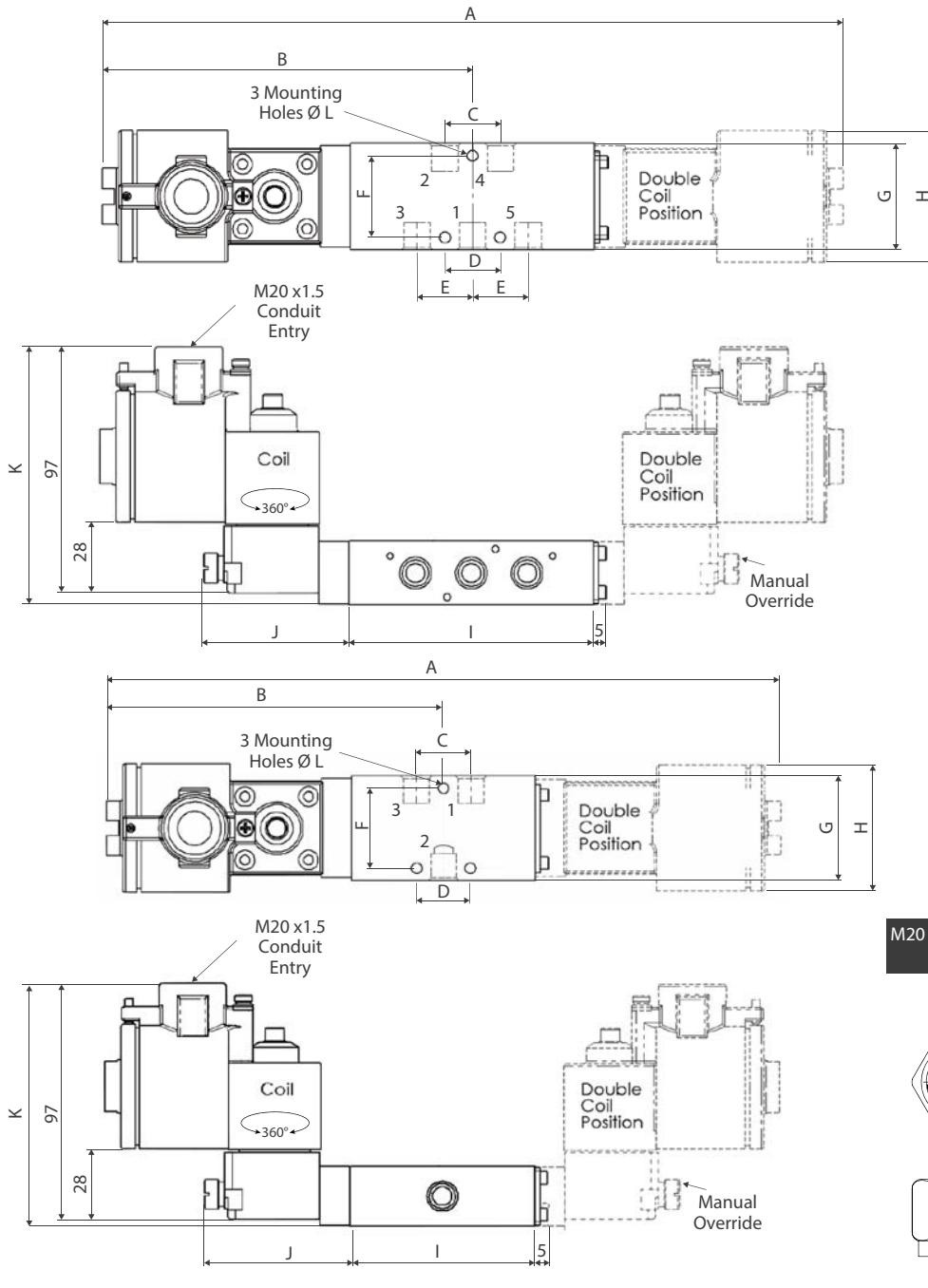
DHR2SA-CM

[FEATURES]

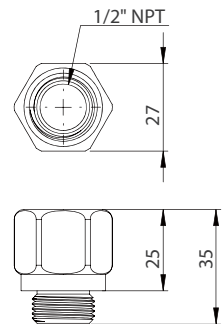
- Integral terminal box with coil housing.
- Stainless steel 316 spool for all models.
- Interchangeable CNOMO interface for various coil options available.
- Single coil spring return function or double coil stay put function.
- Low power consumption.
- Wide range of voltages available.
- Convenient fixing holes to enable bracket mounting.

[INTRODUCTION]

3 port 2 position, 5 port 2 position and 5 port 3 position pilot operated solenoid valve. Suitable for Zone 1 and 2, manufactured in accordance with the requirements of the European harmonized standards EN50014 and EN50018.

[DIMESION]


M20 male to 1/2" NPT female thread adaptor (C)



BODY TYPE		DIMENSIONS (mm)											
		A	B	C	D	E	F	G	H	I	J	K	L
5 Ports 2 Position & 3 Position	1/4 NPT	293	146.50	22	21.80	22	32.20	42.20	52	96.50	50	101.50	4.3
	3/8 NPT	293	146.50	22	21.80	22	32.20	42.20	52	96.50	50	101.50	4.3
	1/2 NPT	335	167.30	32	30.20	31.75	47.6	63.20	52	138	51	104.50	8.7
3 Ports 2 Position & 3 Position	3/4 NPT	335	167.30	32	30.20	31.75	47.6	63.20	52	138	51	104.50	8.7
	1/4 NPT	270	135	22.20	21.80	-	32.20	42.20	52	74	50	101.50	4.3
	3/8 NPT	270	135	22.20	21.80	-	32.20	42.20	52	74	50	101.50	4.3
3 Position	1/2 NPT	302	151.50	31.75	30.20	-	47.6	63.20	52	106.45	51	104.50	8.7
	3/4 NPT	302	151.50	31.75	30.20	-	47.6	63.20	52	106.45	51	104.50	8.7

[VALVE]

MATERIAL SPECIFICATION	STANDARD
Body	Aluminum and Stainless Steel
Spool	Stainless Steel
Seals	H-NBR
Spring	Stainless Steel

VALVE SPECIFICATION	STANDARD
Port Connection Size	1/4" - 3/4" NPT
Working Pressure Internal Pilot Version	2 to 8 bar
Cv Factor	2.0 ~ 4.8
Maximum Ambient Temperature	+65°C
Minimum Working Temperature	-10°C

[COIL]

MATERIAL SPECIFICATION	STANDARD
Coil Case	Stainless Steel Epoxy Powderder Coated
Armature	Magnetic Solenoid Quality Stainless Steel
Springs	Stainless Steel
Seals and Seat	Viton
Coil Former	30% Glass Filled PBT
Magnetic	Class H Coated Copper

SOLENOID	STANDARD	
Type	DC Solenoid Coil	AC Solenoid
Voltage Standard	12, 24, 48, 110	24, 48, 110, 220, 415, 50/60 Hz
Coil Rating	Class H	Class H
Voltage Tolerance	±10%	±10%
Ambient Temperature	-10 to +80°C	-10 to +55°C
Duty Cycle	100%	100%
Degree of Protection	IP66	IP66
Connection	Junction Box with M20 Entry	Junction Box with M20 Entry
Power Consumption	3W (standard), 1.3W (optional)	Pull in - 9.5VA, Holding - 5A
Pressure Range	0 - 8 Bar	0 - 8 Bar

TEMP. RATING	PHASE	RATING	MAX. AMBIENT TEMP.	MAX. CABLE ENTRY TEMP.
T6	DC	3W	40°C	N/A
T4	AC	9.5va	40°C	90°C
T5	DC	3w	55°C	N/A
T3	AC	9.5va	55°C	105°C
T4	DC	3W	65°C	85°C
T4	DC	3W	80°C	105°C

[PRODUCT CODE]


COIL

VOLTAGE

SERIES CODE

PORT

VALVE MATERIAL

FUNCTION

OPTION

COIL

D AV6360D00 RGS AV636D00 Ex d IIC Operator with Stainless Steel.

VOLTAGE

B 24V DC

H 24V DC
Low Power 1.3 Watt

T 110V AC (50/60 Hz)

U 240V AC (50/60 Hz)

PORT

2 1/4" CV2.0

3 3/8" CV2.0

4 1/2" CV4.5

6 3/4" CV4.8

VALVE MATERIAL

S Stainless Steel

A Aluminum

FUNCTION

A 5/2 Single Acting



G 3/2 Single Acting, Normally Closed



B 5/2 Double Acting



H 3/2 Single Acting, Normally Open



C 5/3 3 Position Block Center



I 3/2 Double Acting



D 5/3 3 Position Exhaust Center



J 3/3 3 Position Block Center



E 5/3 3 Position Pressure Center



OPTION

C 1/2" NPT Electric Conduit

X Customized (Additional Code is required)

M Manual Override

P External Pilot Air Connection

H High Temperature FKM Seal

[METHODS OF PROTECTION]

The generic term for all methods of protection of electrical equipment used in Europe is 'explosion proof'. American practice is to use this term for flameproof equipment. The table lists the more usual methods of protection.

TECHNIQUES	
Oil Immersion	o
Pressurisation	p
Powder Filling	q
Flameproof Enclosure	d
Increased Safety	e
Intrinsically Safe	ia
Intrinsically Safe	ib
Non-incendive	N
Encapsulation	m
Special Protection	s

[SOLENOIDS VALVES IN HAZARDOUS AREAS]

Not all of these methods are applicable to solenoid protection, the more commonly used are listed below.

1. **Flameproof** This form of protection entails enclosing the coils in a robust enclosure which will contain an internal explosion should it occur and prevent its transmission to the surrounding atmosphere.
2. **N-Type Protection (Non-incendive)** Generally applied to non-sparking electrical components such as a solenoid coil which will not get abnormally hot even if the armature is locked out.
3. **Encapsulation** This involves enclosing the coil and any associated electrical components in a compound so as to prevent the ignition of a surrounding explosive atmosphere.
4. **Intrinsically Safe** Intrinsic safety is a technique that achieves safety by limiting the electrical-spark energy (and surface temperature) that can arise in hazardous area circuits to levels that are insufficient to ignite an explosive atmosphere.

An intrinsically safe system consists of a certified Intrinsically safe interface which passes signals to and from the process (hazardous area) but limits the energy (that is voltage and current) that can reach the hazardous area under fault conditions.

The interface is usually mounted in the safe area and can be either a shunt diode safety barrier or a galvanic isolator.

In the hazardous area 'simple' or 'non-energy storing devices' (switches, thermocouples & LED's) can be used without certification but 'Energy-storing' equipment such as solenoid valves must be designed so as to prevent this energy escaping and of necessity need to be of sufficiently low power to operate within the constraints of the IS signal.
5. **Special Protection** Offers combination of one or more methods of protection and in the case of solenoids these are usually 'e' and 'm', where the coil is encapsulated, has over temperature protection and the terminals are approved under the increased safety requirement.



R series

3/2, 5/2, 5/3 Function Solenoid Valve Ex d IIC T4/T6

Ex d

Flame Proof Stainless Steel Enclosure, CNOMO Interface

R

series